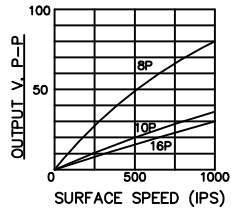
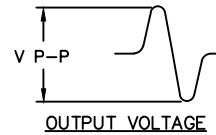
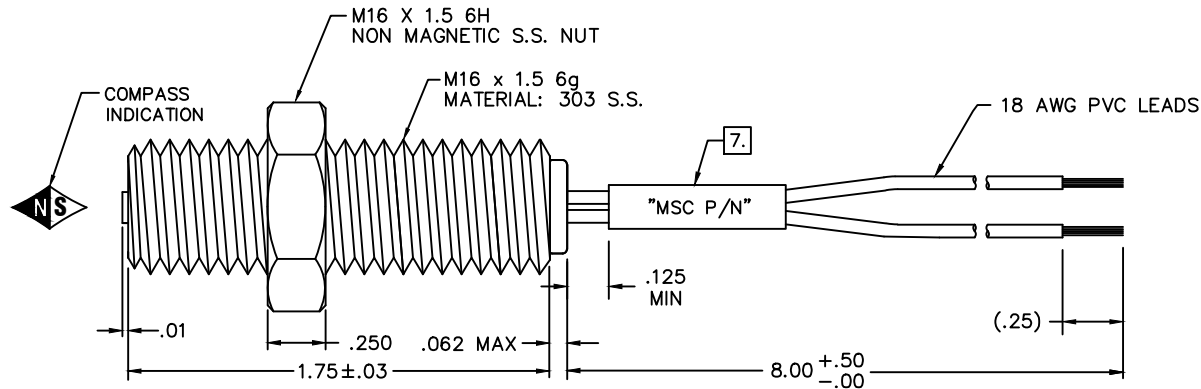
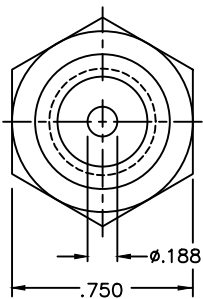


THIS DRAWING, WHICH CONTAINS PROPRIETARY INFORMATION, IS THE PROPERTY OF MAGNETIC SENSORS CORPORATION. IT SHALL NOT BE REPRODUCED IN ANY MANNER NOR DISCLOSED TO THIRD PARTIES WITHOUT WRITTEN PERMISSION OF M.S.C.




REVISIONS			
LTR	DESCRIPTION	DATE	APPRVD
-	PRELIMINARY RELEASE	10.14.03	S.G.



SPECIFICATIONS:

- RESISTANCE: 180 ± 20% OHMS AT 25°C
- INDUCTANCE: 60 mH (REF).
- OUTPUT VOLTAGE:
 - AIRGAP: .005
 - TEST WHEEL: SEE GRAPH
 - SURFACE SPEED: SEE GRAPH
 - LOAD: 100 K OHMS.
- POLARITY: WHITE LEAD POSITIVE WITH RESPECT TO RED LEAD WITH THE APPROACH OF A FERROUS TARGET
- TEMPERATURE RANGE (OPERATING): -40° C TO 125° C
- HIGH POT: 500V ± 15 VRMS MIN (LEAD WIRES TO CASE).
- BLACK INK STAMP, WHITE SHRINK TUBING "MSC P/N" AND DATE CODE (MM-YYYY) USING .062 NOM CHARACTERS.
- EACH LEAD MUST WITHSTAND A 2 LB PULL TEST.
- ENVIRONMENTAL: CORROSION PROOF AND FUNGUS RESISTANT. HUMIDITY UP TO 100%

UNLESS OTHERWISE SPECIFIED DIMENSIONS ARE IN INCHES TOLERANCES ARE: FRACTIONS: DECIMALS: ANGLES: ± 1/64 .XX ± .01 ± 1/2° .XXX ± .005		CONTRACT NO.		 MAGNETIC SENSORS CORPORATION 1365 N. McCAN STREET ANAHEIM, CA 92806	
MATERIAL		APPROVALS			
FINISH		DATE		VARIABLE RELUCTANCE SPEED SENSOR	
401060-30		DRAWN S.L. 10.14.03			
NEXT ASSY USED ON		CHECKED S.G. 10.14.03		SIZE CODE INDENT DRAWING NO.	
APPLICATION		APPRVD S.G. 10.14.03		B OLVP6 401060-30	
DO NOT SCALE DRAWING		REF. SK11122		SCALE: NONE SHEET 1 OF 1	